

CLONABREANY HOUSE & COURTYARD

CROSSAKIEL, CO. MEATH

COMPLETED October 2009

Client: Nupita Limited
Architect: Paul Arnold + Associates Architects
Contract Used: RIAI Yellow Form



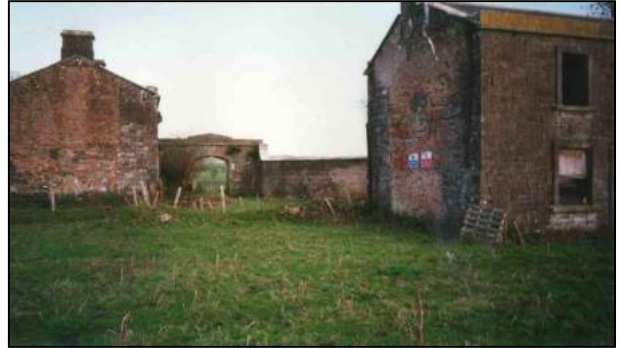
View of Courtyard from Clonabreany House

Summary

The project consisted of the conservation, refurbishment, upgrade and conversion of an existing, derelict, listed Georgian country house and associated courtyard into a modern day wedding venue and ten high specification, energy efficient passive houses. This project won an "An Taisce" award for "Excellence in Conservation."

Key Issues

- Stripping off the remaining parts of the old roof, salvaging slates & stones, stripping down the old stone walls and re-pointing in pebbled lime render, breaking out openings (Minor Demolition) for new doors and windows, salvaging demolished stonewalls to build sections of old damaged walls to the complete installation of a new roof in traditional slates all to conservation best practices.
- The interior block walls were finished using a combination of lime render and re-pointed pebbled lime pointing to the existing stone walls
- All houses were finished to a very high standard. All houses to the rear of the courtyard complex were finished with Zinc and timber Cladding & Zinc Roofs.
- Extensive landscaping throughout the site.
- Installation of substantial mechanical and Electrical packages



Clonabreany House prior to commencement



Courtyard complex prior to commencement



Courtyard complex prior to commencement



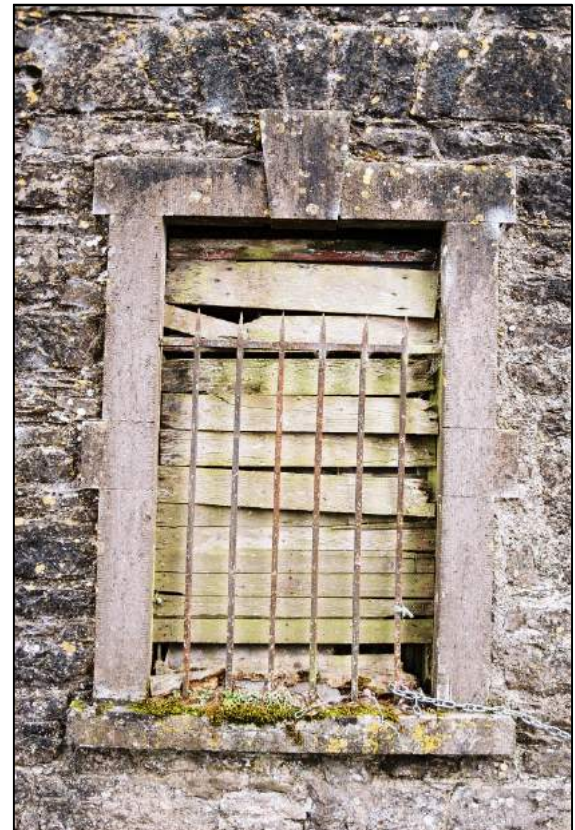
Courtyard complex prior to commencement



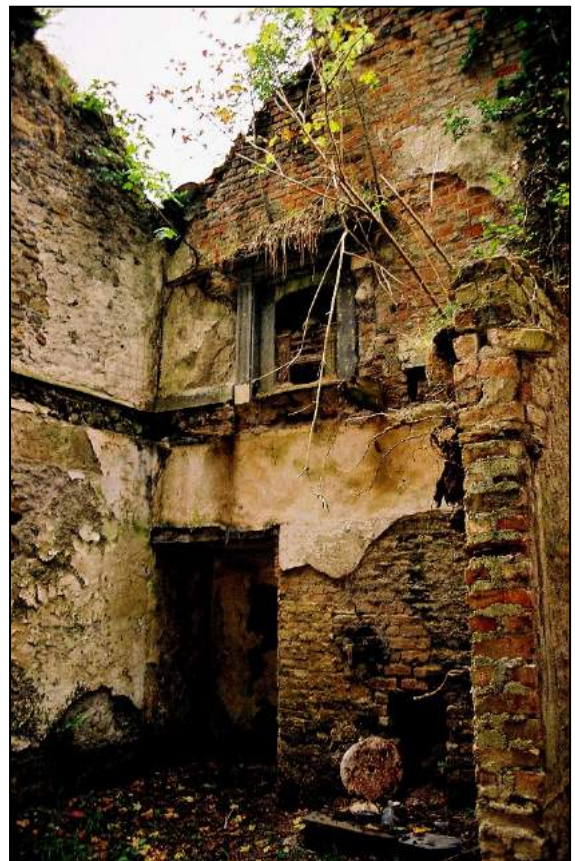
Courtyard complex prior to commencement



Courtyard complex prior to commencement



Courtyard complex prior to commencement



Courtyard complex prior to commencement



Existing Windows and Doors - Courtyard complex prior to commencement



Restoration + Construction works to Clonabreany House and Courtyard complex



Restoration + Construction works to Clonabreany Courtyard complex



Restoration + Construction works to Clonabreany Courtyard complex



Restoration and refurbishment of Clonabreany Courtyard nearing completion



Rear extension to Clonabreany Courtyard, including timber external cladding, zinc-clad flat floors and alu-clad sliding doors and windows



Conversion of existing single storey shed into Civil Ceremony venue and installation of temporary marquee for events



Clonabreany Courtyard post restoration and refurbishment



Clonabreany Courtyard post restoration and refurbishment



Clonabreany Courtyard post restoration and refurbishment



Clonabreany Courtyard post restoration and refurbishment



Typical kitchen area in Courtyard accommodation



Typical Courtyard accommodation interiors, including exposed stone walls



Existing shed converted to Sibin bar and dining area at rear of Courtyard complex



Sibin bar outdoor seating area





Clonabreany House to the left with the courtyard complex to the right





Clonabreany House post restoration and refurbishment, including
Temporary event-marquee to the right





Entrance foyer to Clonabreany House



Entrance foyer to Clonabreany House



Clonabreany House Reception room



Bridal suite, first floor Clonabreany house



Courtyard to rear of Clonabreany House – extension to existing property includes the section to the left of the photo including 2 no. windows at ground and first floor



Main entrance to Clonabreany House